



I·OFFICE

I·OFFICE

White Office Building

Location Tehran, Iran

Function Office & Commercial facility

Site area 215m²

Bldg. area 185m²

Total floor area 1,500m²

Stories B1, 7FL

Structure Metal

Finish Aluminum louver profile

Author Design Farshad Kazerooni, Farnaz Bakhshi, Azin Soltani

Design Associates Mahta Heidari, Ali Kashtiar, Hadi Sharifzadeh, Nioosha Rashidi, Zoha Nekouian, Shabnam Abtahi

Photographer Farshad Kazerooni, Azin Soltani

BNS studio designed White Office Building which is located at one of the main street in shahrak-e-gharb, Tehran. Its total area is 1500 sqm. The office complex comprises five levels of open office floors and one double height retail store at street level.

The main aim of design was to create an iconic façade to be in contrast with its surrounding buildings. The building façade is designed as a double skin façade. The first layer is a double glazed curtain wall. The building south and east facades are treated with series of white color horizontal aluminum louver that is being used as sunscreens which protects the internal glass façade from solar gain.

The distance between aluminum louver profile with 5x5 cm and 10x10 cm sections are designed according to human eye level in siting and standing positions in order to provide the suitable view and pleasant light and shadow.

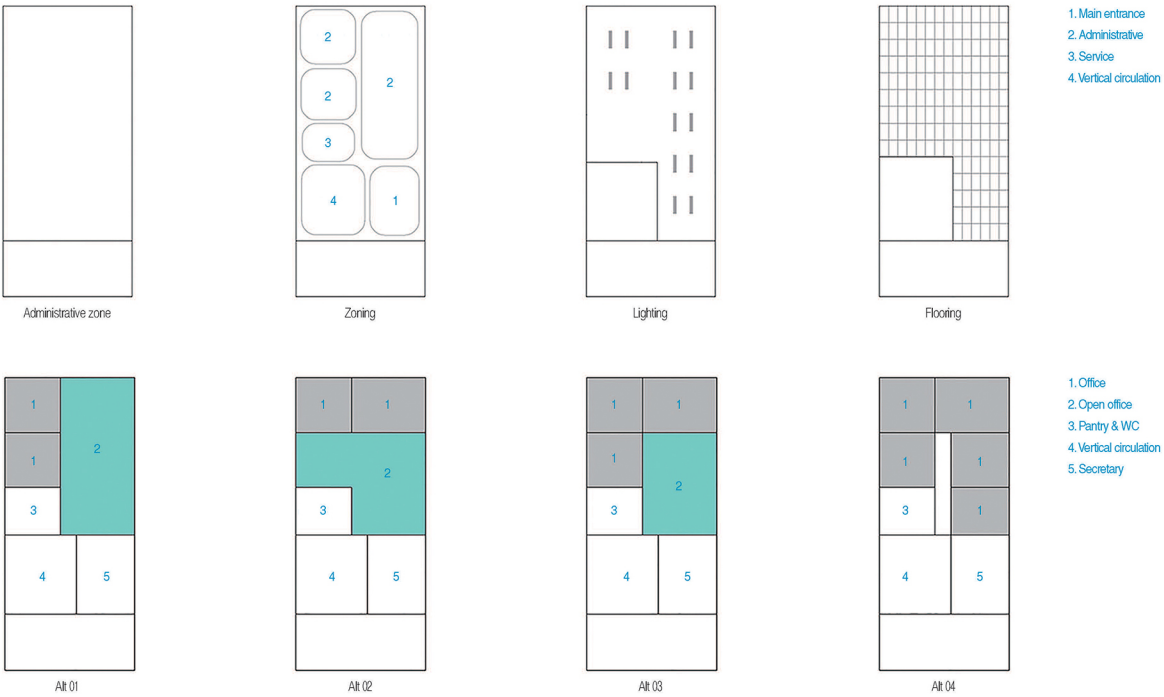
There is about 70 cm space between the two skins that connect to each other with galvanized catwalk. There is an opening in façade louver at each floor level for both letting the windows to open for natural ventilation and for making the building façade more dynamic. In front of each opening there is a flower box with automatic irrigation which brings natural greens into the building façade.

The double height retail store which is located at street level is not covered by louver skin façade to create sense of lightness and make it suitable for having wide retail windows.

This iconic façade is designed and constructed in collaboration with Detailed Design Team, Naser Naghdi and Mansour Naghdi, and façade contractor, Alma aluminum industry.

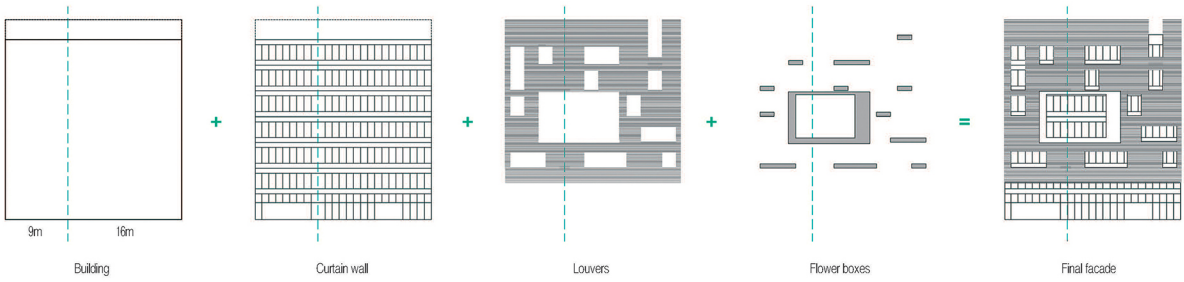






Plan layout program

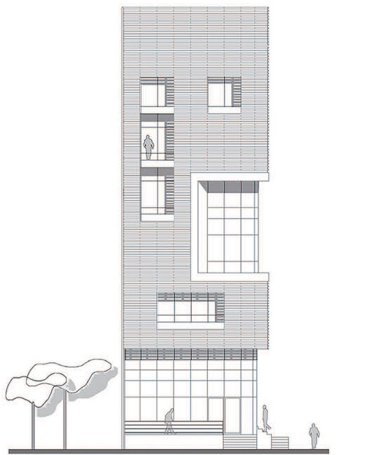




Facade design process



East elevation

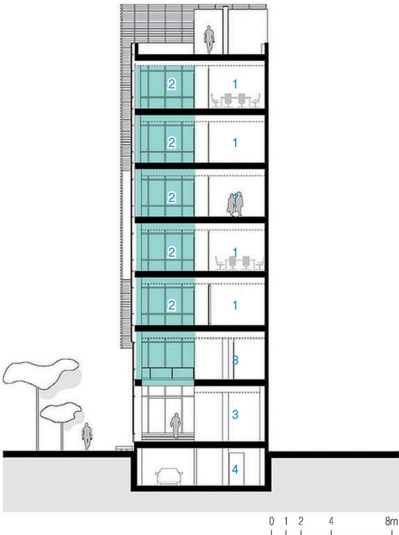


South elevation



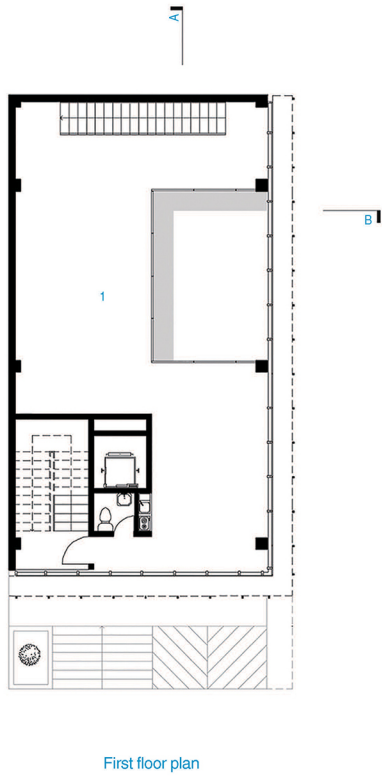
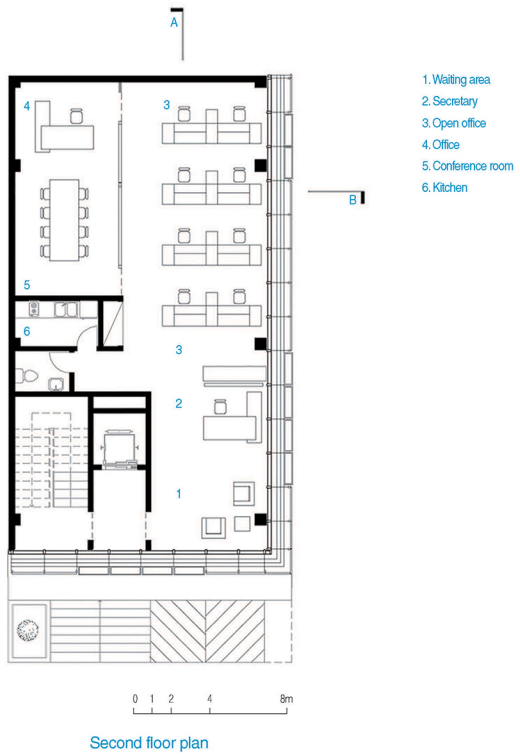
- 1. Waiting area & Secretary
- 2. Open office
- 3. Commercial area
- 4. Parking

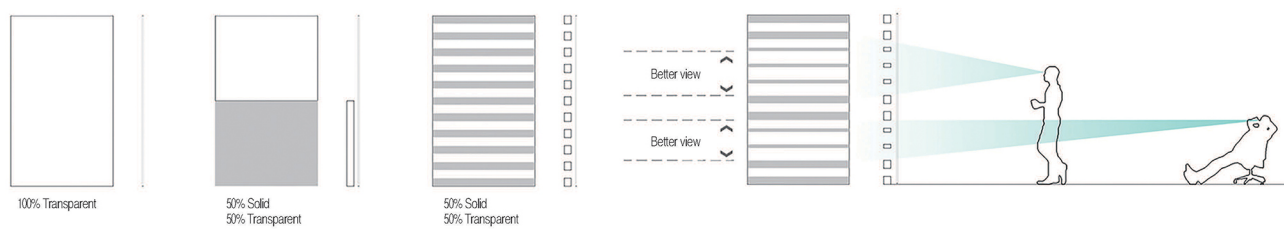
Section A-A



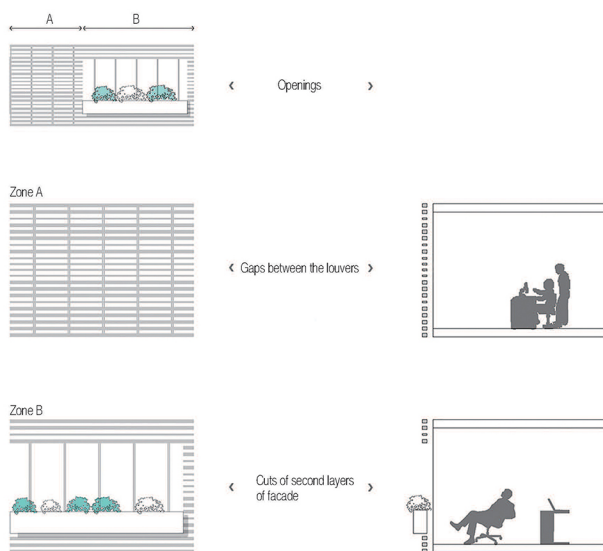
- 1. Conference room
- 2. Open office
- 3. Commercial area
- 4. Parking

Section B-B

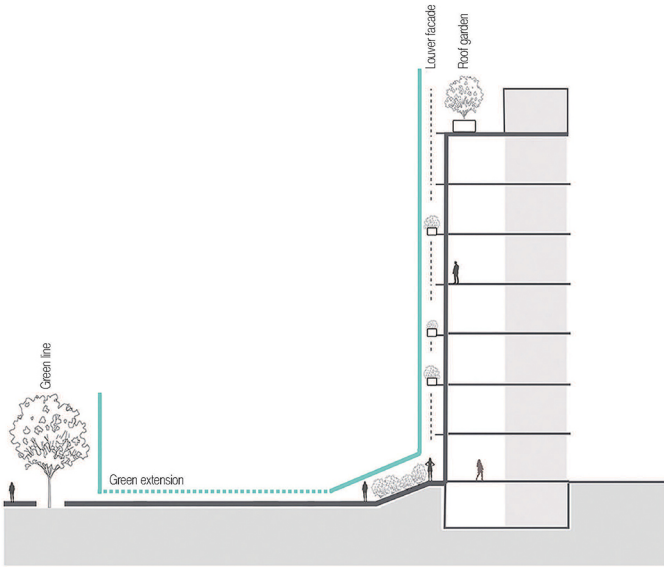




Aluminum louvers gaps diagram

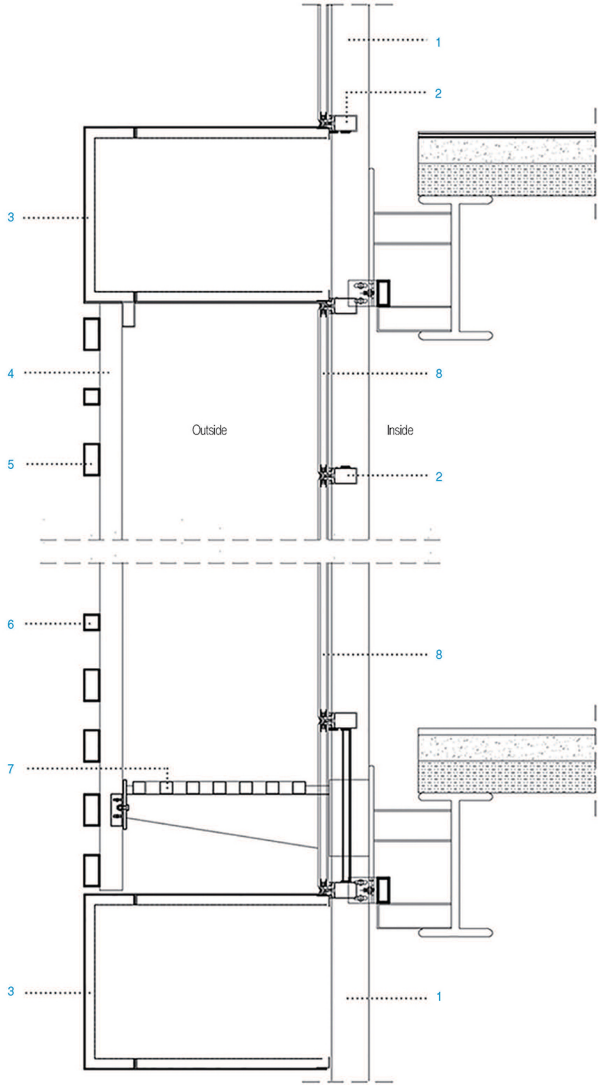


Facade opening diagram



Landscape diagram

- 1. Vertical mullion
- 2. Horizontal mullion
- 3. Composite panel
- 4. Aluminium rail
- 5. Aluminium louver 5x10
- 6. Aluminium louver 5x5
- 7. Aluminium profile
- 8. Curtain wall



Facade detail