

M I N I - B U I L D I N G

240

5

NEIGHBORHOOD
FACILITY

화이트 오피스 빌딩

WHITE OFFICE BUILDING

ARCHITECT: BNS STUDIO / FARSHAD KAZEROONI, FARNAZ BAKHSI, AZIN SOLTANI

THE PROJECT is located at one of the main street in shahrak-e-gharb, Tehran. Its total area is 1,500m². The office complex comprises five levels of open office floors and one double height retail store at street level. The main aim of design was to create an iconic facade to be in contrast with its surrounding buildings.

The building facade is designed as a double skin facade. The first layer is a double glazed curtain wall. The building south and east facades are treated with series of white color horizontal aluminum louver that is being used as sunscreens which protects the internal glass facade from solar gain. The distance between aluminum louver profile with 5×5cm and 5×10cm sections are designed according to human eye level in sitting and standing positions in order to provide the suitable view and pleasant light and shadow. There is about 70cm space between the two skins that connect to each other with galvanized catwalk. There is an opening in facade louver at each floor level for both letting the windows to open for natural ventilation and for making the building facade more dynamic. In front of each opening there is a flower box with automatic irrigation which brings natural greens into the building facade. The double height retail store which is located at street level is not covered by louver skin facade to create sense of lightness and make it suitable for having wide windows.

Location Tehran, Iran **Use** Office **Area** 1,500m² **Completion** 2015

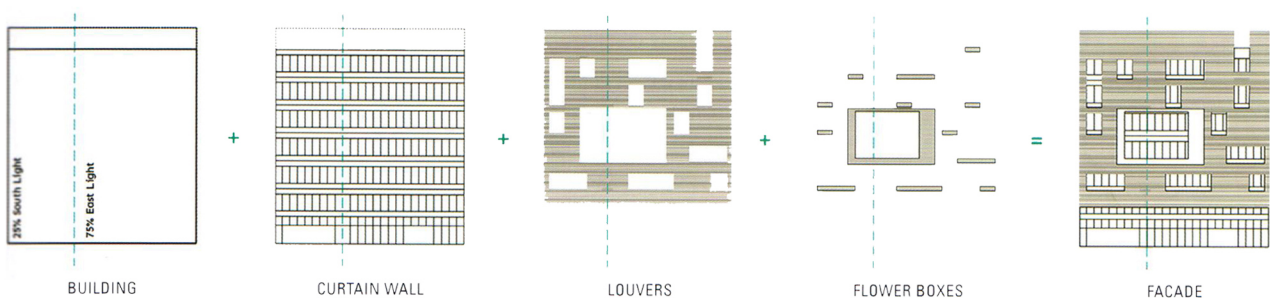
Design associates Mahta Heydari, Ali Kashtara, Hadi Sharifzadeh, Nioosha Rashidi, Zoha Nekouian, Shabnam Abtahi **Detailed design consultant** Naser Naghdi, Mansour Naghdi **Facade contractor** Alma aluminum industry **Photographers** Farshad Kazerooni, Azin Soltani

위치 이란 테헤란 용도 업무 면적 1,500㎡ 완공 2015 설계 BNS

스튜디오 / 파사드 카제루니, 파르나즈 바크시, 아진 솔타니 사진 파사드 카제루니, 아진 솔타니

건물은 테헤란 샤흐라크-이-가르브 지역 중심가에 들어서 있다. 총 면적 1,500㎡의 이 건물은 개방형 오피스 5개 층으로 구성되어 있으며, 지상층에는 2층 높이의 층고를 지닌 상업용 매장이 들어서 있다. 디자인의 주된 목표는 주변 건물과 대조를 이루는 상징적인 입면의 구축이었다.

건물 입면은 이중 외장 구조로 설계되었고, 1차 외장으로는 이중창 커튼월 시스템을 적용했다. 건물의 남측과 동측 입면은 흰색 수평 알루미늄 루버로 덮여 있고, 이는 안쪽 유리 입면으로의 태양광 유입을 막아주는 차양 역할을 한다. 5×5cm, 5×10cm 알루미늄 루버 사이의 간격은 앉거나 서 있을 때의 눈높이에 맞춰졌고, 이는 각각의 상황에 알맞은 조광과 쾌적한 채광 환경을 확보해준다. 두 외장 구조 사이에는 폭 70cm 공간이 있고, 양쪽을 연결해주는 아연도금강판 소재의 외부 통로가 설치되어 있다. 각 층마다 루버 입면에 개방면을 두어 자연 환기를 위해 창을 열 수 있도록 했고, 보다 역동적으로 보이는 입면을 완성하였다. 각 개방면 앞에는 자동관수 장치를 설치한 화단이 있고 이는 건물 입면에 자연 녹지를 형성해준다. 2층 높이 층고의 1층 상업용 매장에는 루버 외장을 적용하지 않아 건물에 경량감을 부여해주는 동시에 폭이 넓은 창을 가질 수 있도록 했다.

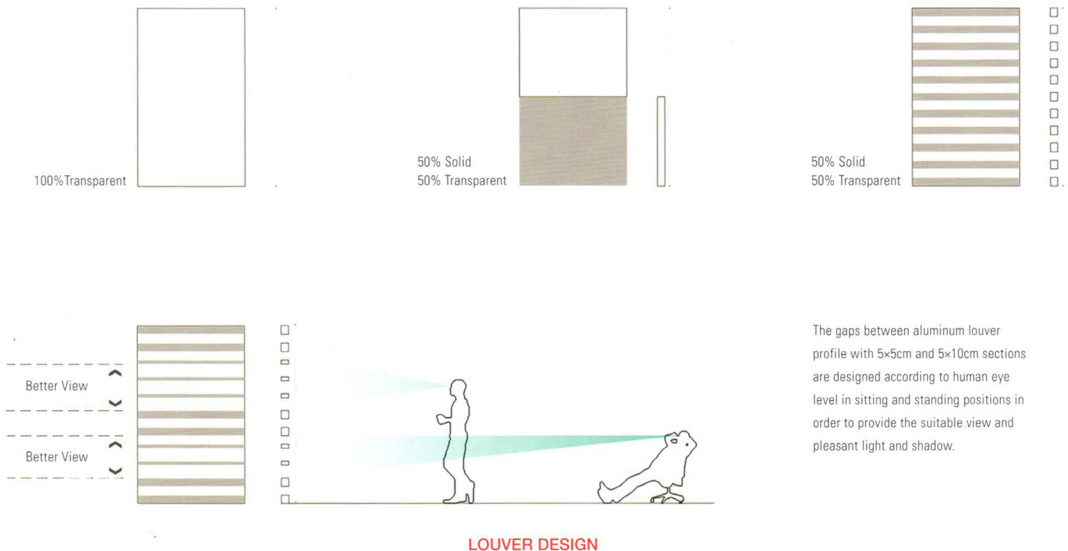


— Exterior view

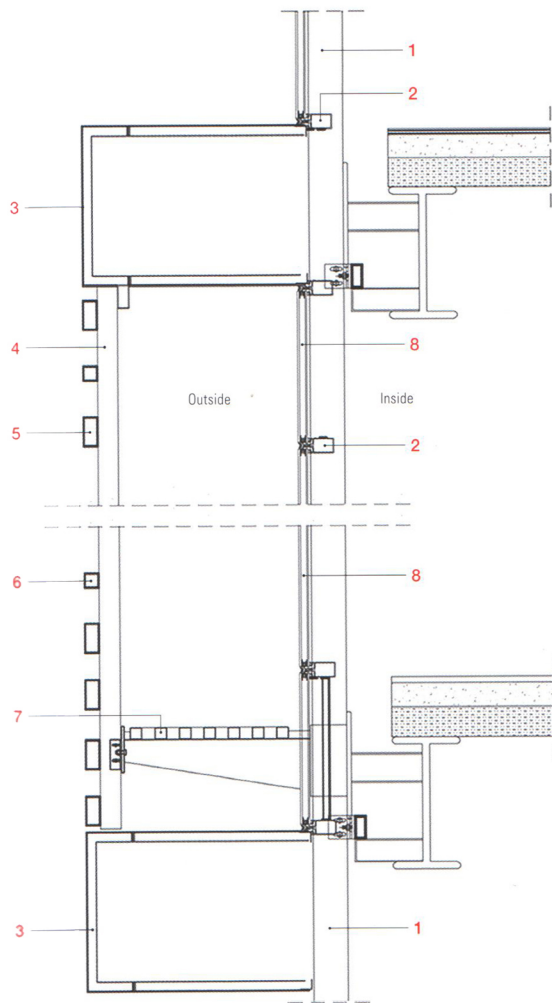




☀️ ↑ Facade view from east ➡️ Facade view from south



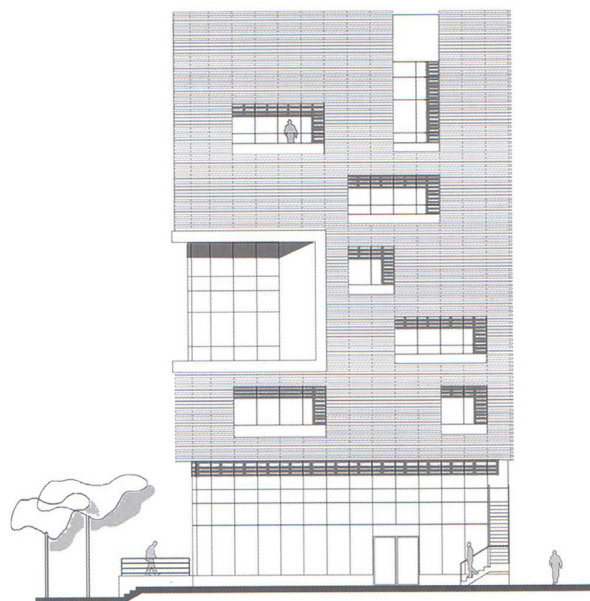
LOUVER DESIGN



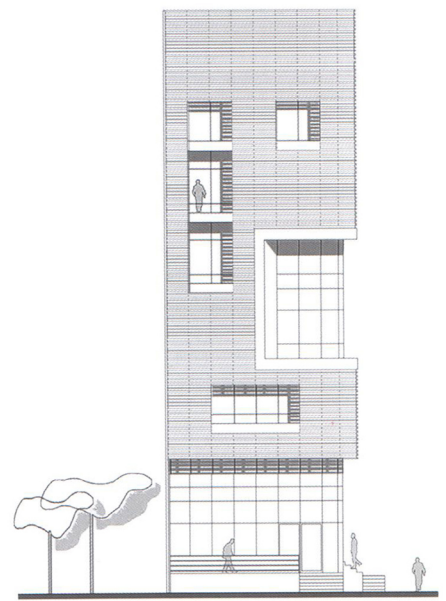
WALL SECTION DETAIL



- 1 VERTICAL MULLION
- 2 HORIZONTAL MULLION
- 3 COMPOSITE PANEL
- 4 ALUMINUM RAIL
- 5 5x10MM ALUMINUM LOUVER
- 6 5x5MM ALUMINUM LOUVER
- 7 ALUMINUM PROFILE
- 8 CURTAIN WALL



EAST ELEVATION



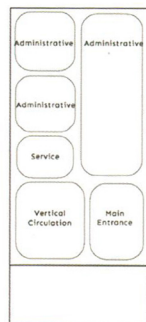
SOUTH ELEVATION



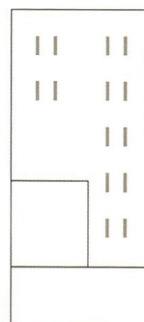
↑ Looking up view of facade



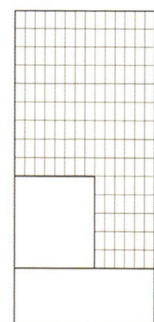
Administrative Zone



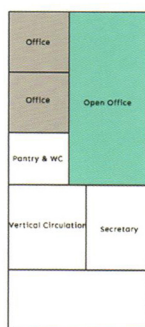
Zoning



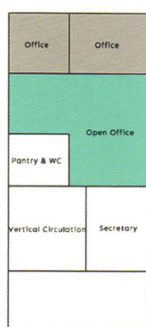
Lighting



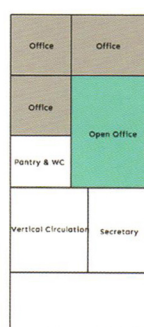
Flooring



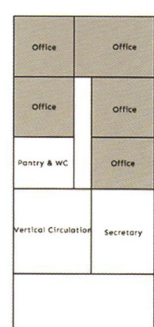
ALT 01



ALT 02

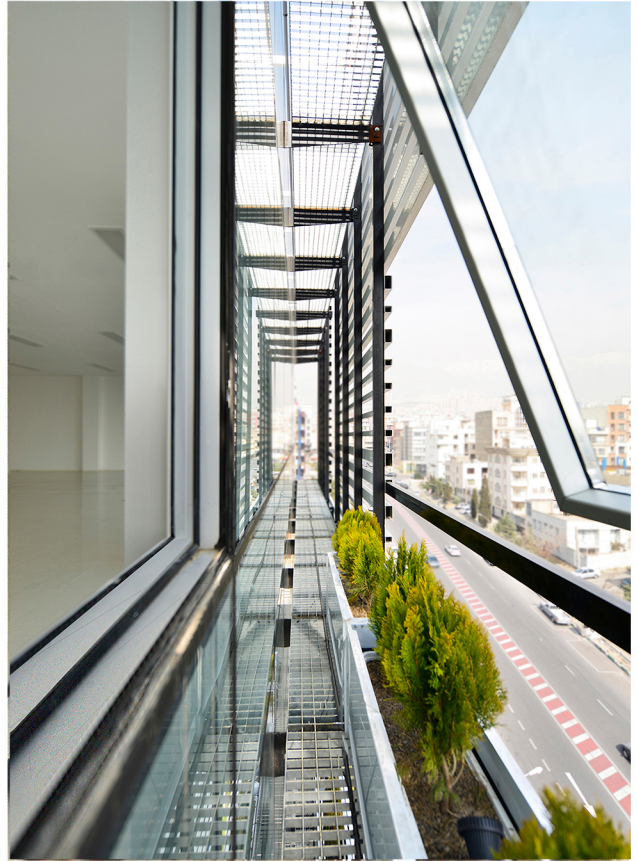
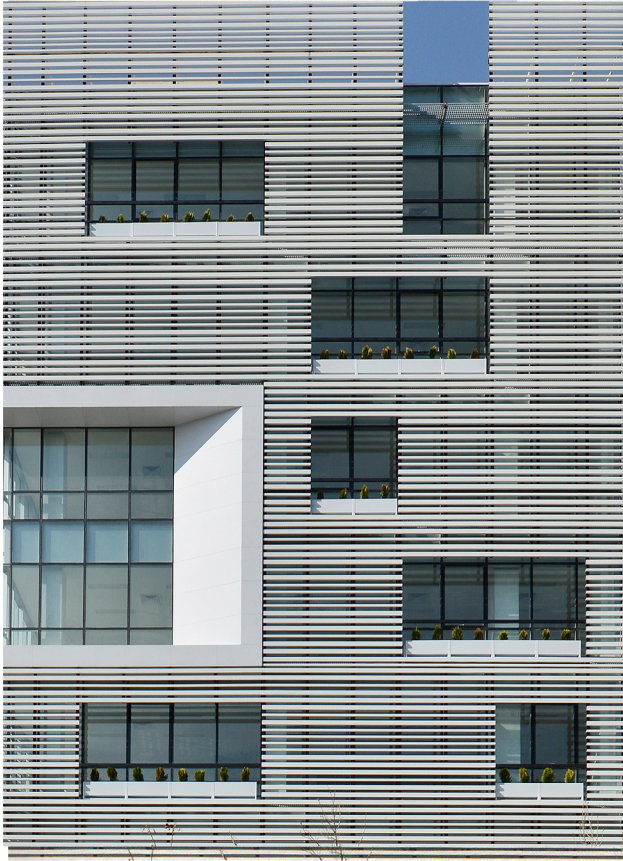


ALT 03



ALT 04

PLAN LAYOUT

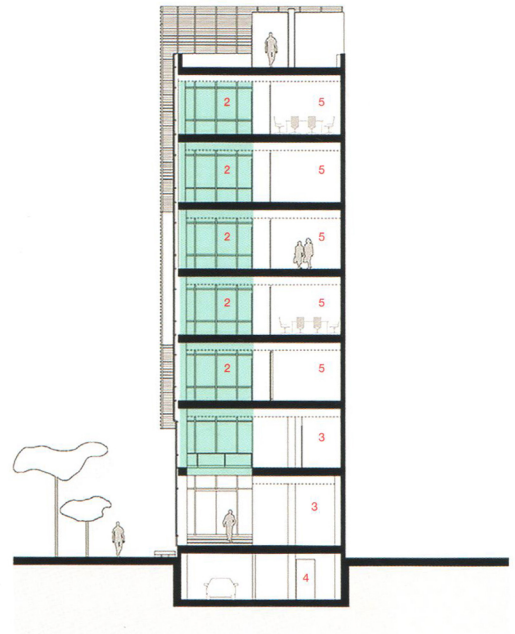


— Louver detail — Catwalk between the wall

- 1 WAITING AREA & SECRETARY
- 2 OPEN OFFICE
- 3 COMMERCIAL AREA
- 4 PARKING
- 5 CONFERENCE ROOM



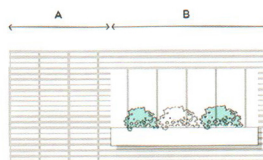
LONGITUDINAL SECTION



CROSS SECTION

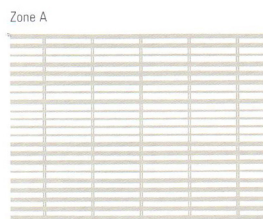


— Void — Open office — Commercial area

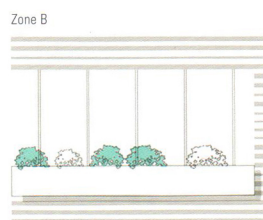


◀ Openings ▶

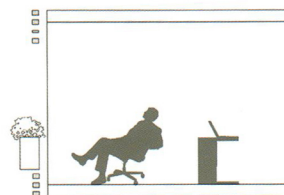
There are two types of openings in facade, specified as type A and type B. Rectangular cuts allow the user to enjoy the framed view and aluminum louvers controls the direct sunlight.



◀ Gaps between the louvers ▶



◀ Cuts of second layers of facade ▶

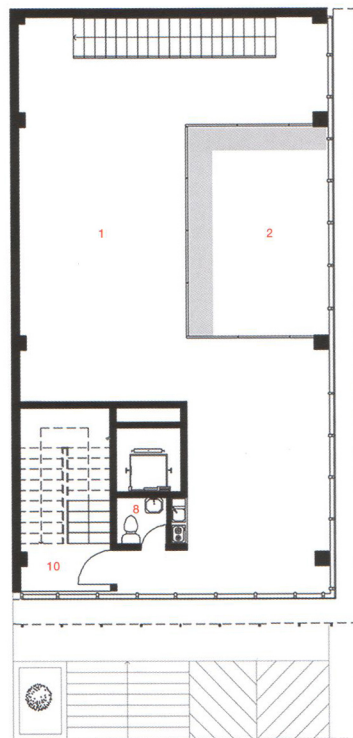


FACADE OPENING

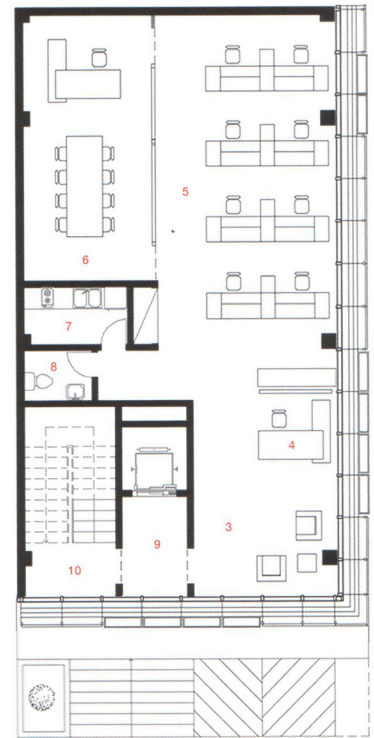


↑ Open office

- 1 COMMERCIAL AREA
- 2 VOID
- 3 WAITING AREA
- 4 SECRETARY
- 5 OPEN OFFICE
- 6 CONFERENCE ROOM
- 7 KITCHEN
- 8 RESTROOM
- 9 ELEVATOR HALL
- 10 STAIRS



1ST FLOOR PLAN



2ND-5TH FLOOR PLAN